

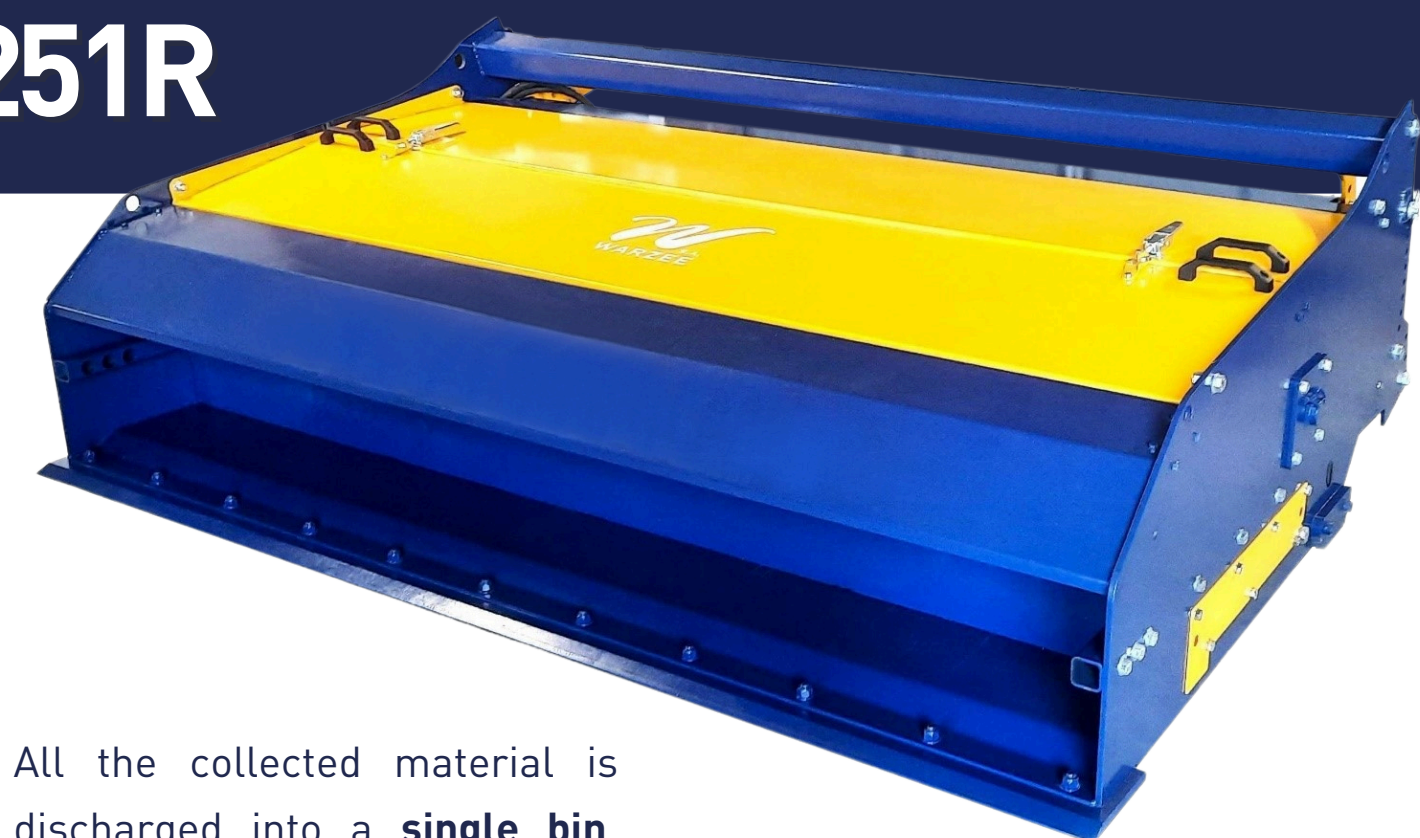


SWEEPER BR251R

SIMPLICITY & EFFICIENCY

Combining simplicity and efficiency, the Warzée BR251R hydraulic brush features an exclusive system for **scraping** and **brushing** in a single pass.

The front of the bin scrapes the ground to remove the larger debris, while the brushes ensure a **flawless** and **deep finish** to the job.



All the collected material is discharged into a **single bin**. The front part of this container is designed to collect the larger debris, while the high-capacity rear section is also intended to recover wet waste.

A simple double-acting **hydraulic function** is enough to operate the brush.

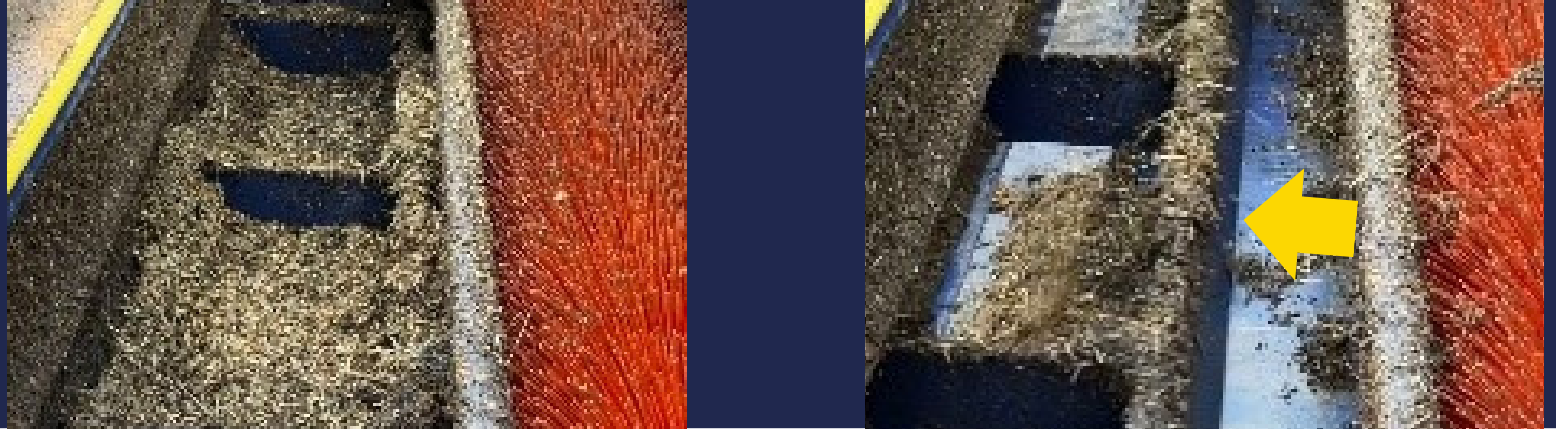
FLOATING BRUSHES

The collector bin is emptied by simply reversing the **hydraulic selector**.

Using it in the initial direction closes the bin and automatically restarts the brush rotation.

BOTTOM DISCHARGE SYSTEM



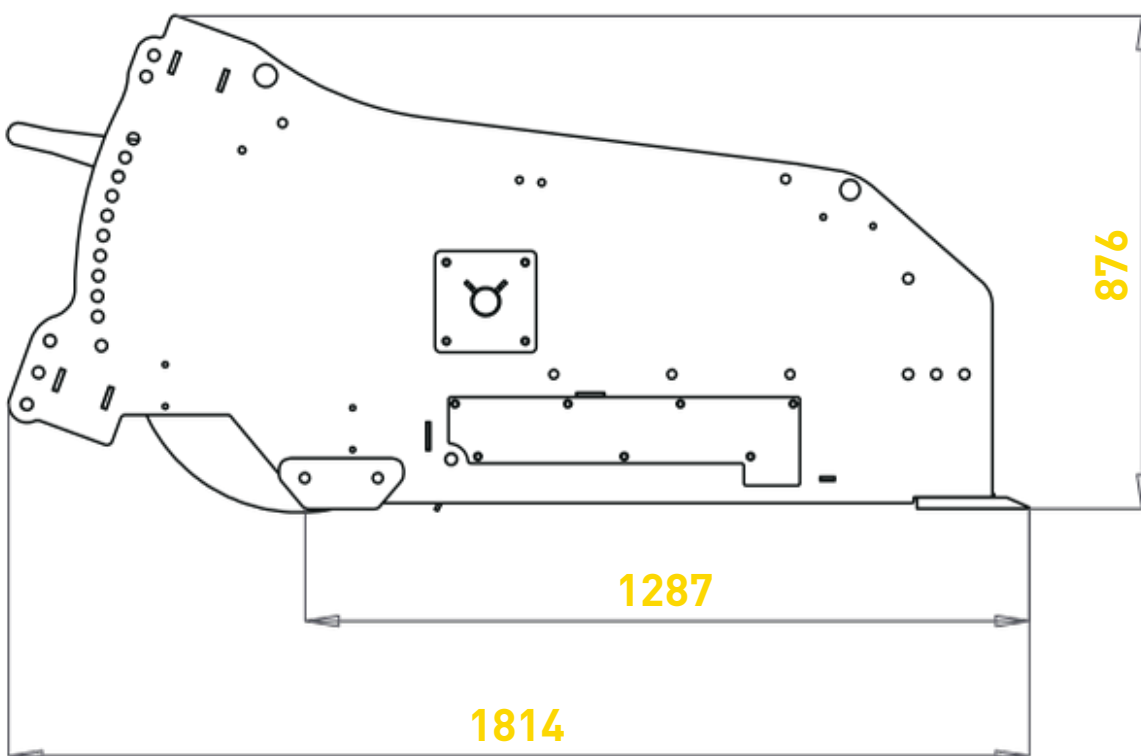
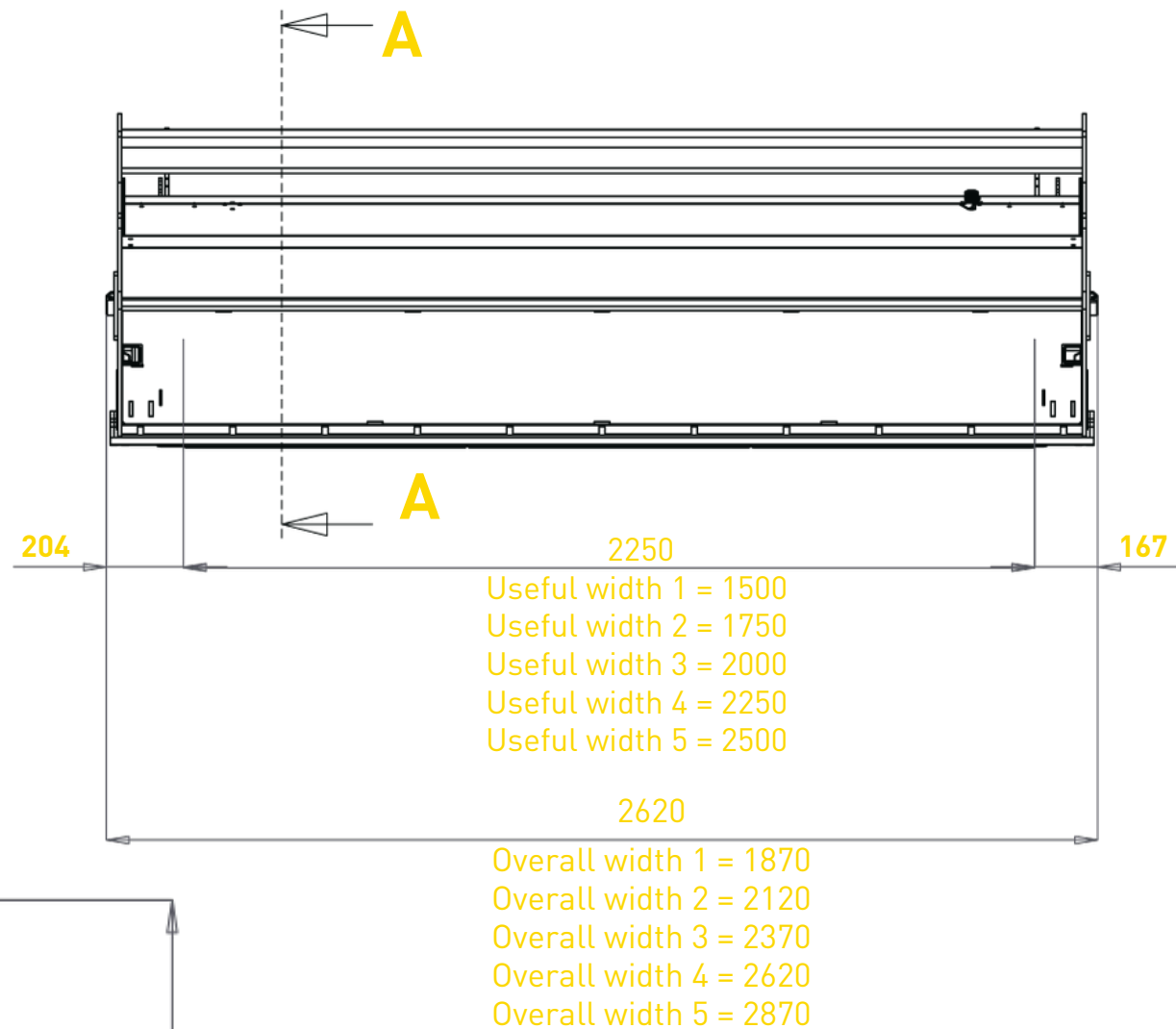


The brush is mounted on a floating system that ensures it follows the contours of the ground. It is also possible to **lock** the floating system to achieve a more aggressive brushing action.

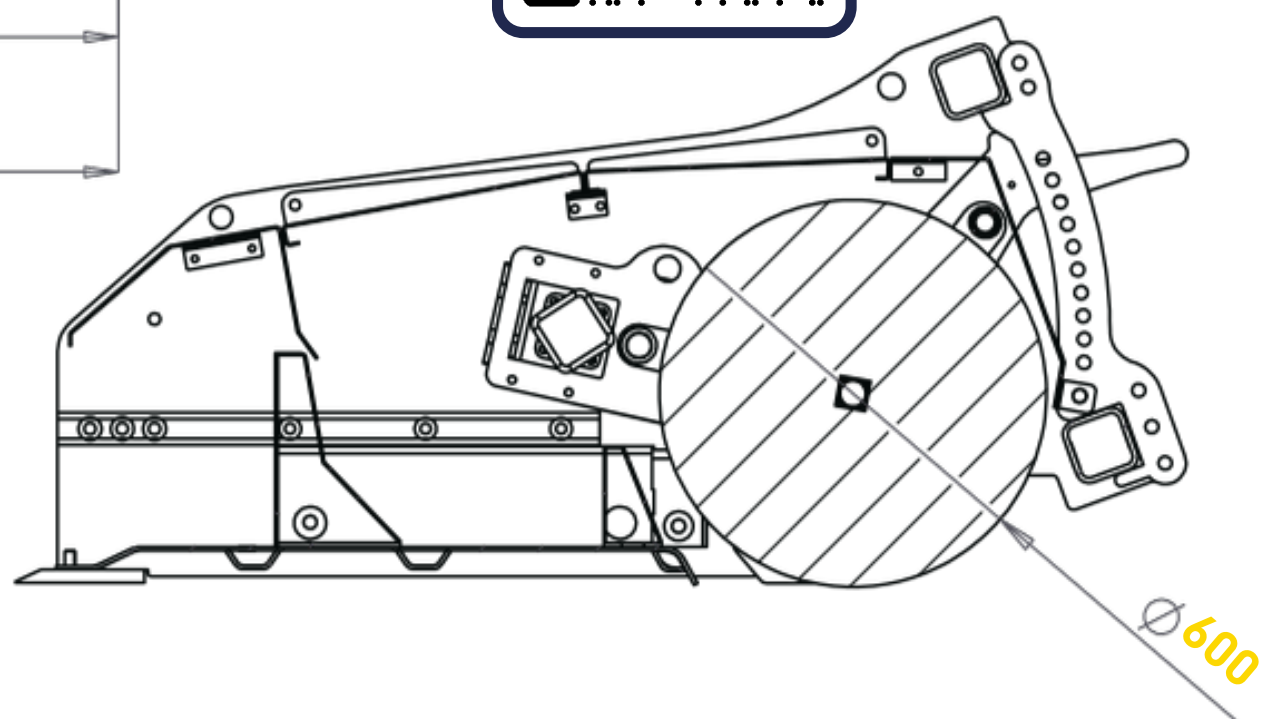
Compatible with all types of carriers, Warzée brushes are equipped with **interchangeable bolt-on attachments**.

As an option, Warzée BR251R brushes can be equipped with **swivel wheels** that keep the brush 4 cm above the ground.

TECHNICAL DRAWINGS



Exterior view



Interior view

